



- 1) Product name: Superfine CalMg
Microelement fertilizer calcium (CaO), magnesium oxide (MgO)
- 2) Volume: 500 ml, 10 L
- 3) Function: Improves deficiency in CaO, MgO, B₂O₃, Fe, and Amino acid
- 4) Registered: Microelement complex fertilizer
- 5) Ingredients: Microelement fertilizer Ca (CaO 20%, MgO 7.4%, K₂O 4%, B₂O₃ 0.05%, Fe 0.05%)
- 6) Raw material: calcium carbonate/magnesium, potassium hydroxide, boric acid, iron sulfate



**Bioactive Substance
Super Cal-Mag**

**Functions
and
Effects**

- Enhances self-defense (immunity) of plants against the intrusion of various insects and bacteria.
- Increases defense against environmental stress, heat and cold, drought, and soil toxicity.
- Helps the growth of root ends and new leaves
- Helps to retain flowers until pollination.
- Increases the durability of stems and prevents blossom-end rots of tomato, sweet pepper, red pepper, and melon.
- Enhances defense against fungus and bacterial diseases.
- Acts as the main ingredient in the coloration stage of fruit and vegetables.
- Helps to increase chlorophyll concentration and CO₂ enzymes (Carboxyl-lase) through balanced absorbing and breakdown of nutrition.



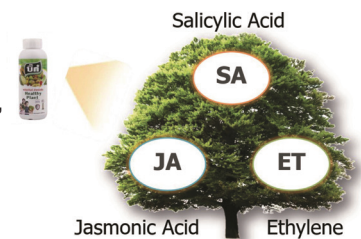
- 1) Product name: Superfine Big
Microelement fertilizer calcium (CaO), magnesium oxide (MgO)
- 2) Volume: 500 ml, 10 L
- 3) Function: Improves deficiency in CaO, MgO, B₂O₃, Fe, and Amino acid
- 4) Registered: Microelement complex fertilizer
- 5) Ingredients: Salicylic Acid, Jasmonic Acid, Ethylene, boron 0.05%, molybdenum 0.0005%



**Bioactive substance
Super Big**

**Functions
and
Effects**

- Enhances self-defense (immunity) of plants against the intrusion of various insects and bacteria.
- Increases defense against environmental stress, heat and cold, drought, and soil toxicity.
- Helps the growth of root ends and new leaves
- Chelating Mineral and Amino acid to increase stability of molecules.
- Induce formation of plant growth-promoting substance.



**Superfine
Calma, Big
Subjects of
application
And dosage**

Category	Crops	Solubility (Dilution)	Number of uses
Vegetables	Napa cabbages, lettuce, spinach, radish, crown daisy, chicory	20 ml/20 L	1-2 times
Fruit vegetables	Watermelons, pumpkins, tomatoes, cucumbers, eggplants, peppers, strawberries, etc.	20 ml/20 L	2-3 times
Fruits	Apples, pears, grapes, peaches, plums, blueberries, etc.	20 ml/20 L	3-5 times
Flowers	Roses, lilies, carnations	20 ml/20 L	2-3 times

농업인에게 안전하고
 소비자에게 건강하며
 미래세대에게 깨끗한 환경을!

Safety for Farmers
 Health for Customers
 Clean Environment for future generations!

SUPERFINE Series (6 products)

Superfine

Organic agricultural material for natural pest control system using
 Nanotechnology and bio metabolites

**Solution for bacteria, virus, pest,
 and bioactivity substances**

Superfine Series

**Pest control period recommended
 by Hana Biotech**

**The best choice for high
 quality and yield**

Usage period	Jan	Feb	Mar	Apr	May	Jun	Jul	Aug	Sep	Oct
	<ul style="list-style-type: none"> Perfect soil Sun root 		<ul style="list-style-type: none"> Palm Soil Galaxy 					<ul style="list-style-type: none"> Galaxy Cube Additional N-K 		



Hana Biotech Co., Ltd.
Head Office (R&D): 823, Dongtansunhwan-daero,
 Hwaseong-si (1510ho, Apexcity)
Production plant: 60-23, Gunseogongdan-ro
 Gunseo-myeon, Yeongam-gun,
 Jeollanam-do
Telephone: 031-662-7811
Fax: 070-7585-1112
Website: www.hanabiot.com

Sales agencies

* This brochure is written in May 2020, and the details are subject to change in the future.
 * Please use this content for references and make sure to read the labels on the packaging before use



- 1) Product name: Superfine Cu
- 2) Size: 500 ml, 1000 ml /bottle
- 3) Main functions: microelement copper, boric acid, molybdenum
- 4) Ingredients: copper 1.0%, boron 0.5%, molybdenum 0.0005%
- 5) Raw material: copper, boric acid, molybdenum nitride

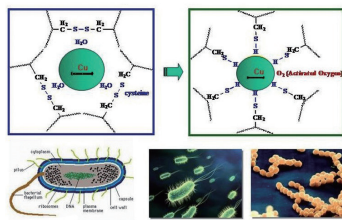


**Bacteria, Fungi,
Virus super-prevention**

**Functions
and
Effects**

- Enhances self-defense (immunity) of plants against the intrusion of various insects and bacteria.
- Increases defense against environmental stress, heat and cold, drought, and soil toxicity.
- Cu(copper), B₂O₃(boron), and Mo(molybdenum) proliferate on the epithelium of plants to promote growth.
- Prolongs leaves growing toward the light (light source).
- Reinforce stem durability.
- Helps to increase chlorophyll concentration and CO₂ enzymes (Carboxyl-lase) through balanced absorbing and breakdown of nutrition.

Can control Mechanism of Cysteine



Bacterial shot hole disease (Before, After)



- 1) Product name: Superfine S
- 2) Size: 500 ml, 1,000 ml / bottle
- 3) Main functions: microelement sulfur, boron, molybdenum
- 4) Ingredients: sulfur 10%, boron 0.5%, molybdenum 0.0005%
- 5) Raw material: solubilized sulfur, boric acid, molybdenum nitride



**Bacteria, Fungi,
Virus super-prevention**

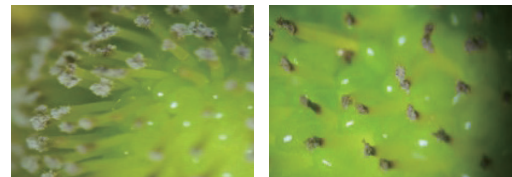
**Functions
and
Effects**

- Enhances self-defense (immunity) of plants against the intrusion of various insects and bacteria.
- Increases defense against environmental stress, heat and cold, drought, and soil toxicity.
- S(sulfur), B₂O₃(boron), and Mo(molybdenum) proliferate on the epithelium of plants to promote growth.
- Prolongs leaves growing toward the light (light source).
- Reinforce stem durability.
- Helps to increase chlorophyll concentration and CO₂ enzymes (Carboxyl-lase) through balanced absorbing and breakdown of nutrition.

Can control Mechanism of Cysteine



Can control Mechanism of Cysteine



**Superfine
Cu, S
Subjects of
application
And dosage**

Category	Crops	Solubility (Dilution)	Number of uses
Vegetables	Napa cabbages, lettuce, spinach, radish, crown daisy, chicory	20 ml/20 L	1-2 times
Fruit vegetables	Watermelons, pumpkins, tomatoes, cucumbers, eggplants, peppers, strawberries, etc.	20 ml/20 L	2-3 times
Fruits	Apples, pears, grapes, peaches, plums, blueberries, etc.	20 ml/20 L	3-5 times
Flowers	Roses, lilies, carnations	20 ml/20 L	2-3 times



- 1) Product name: Superfine K
- 2) Size: 500 ml, 1,000 ml / bottle
- 3) Main functions: microelement manganese, zinc
- 4) Ingredients: vegetable extract, manganese 0.1%, zinc 0.1%
- 5) Raw material: vegetable extract, manganese sulfate 0.1%, zinc sulfate 0.1%



Pest Super-prevention



- 1) Product name: Superfine H (Nano H)
- 2) Size: 500 ml, 1,000 ml / bottle
- 3) Main functions: microelement copper, boric acid, molybdenum
- 4) Ingredients: vegetable extract, boron 0.5%, molybdenum 0.0005%
- 5) Raw material: sophora extract, nicotine, paraffin oil



Pest Super-prevention

**Functions
and
Effects**

- Enhances self-defense (immunity) of plants against the intrusion of various insects and bacteria.
- Increases defense against environmental stress, heat and cold, and drought, and soil toxicity.
- Mn, Zn proliferates in the plant's epithelial cells to help growth.
- Prolongs leaves growing toward the light (light source).
- Reinforce stem durability.
- Helps to increase chlorophyll concentration and CO₂ enzymes (Carboxyl-lase) through balanced absorbing and breakdown of nutrition.



Melon Aphid



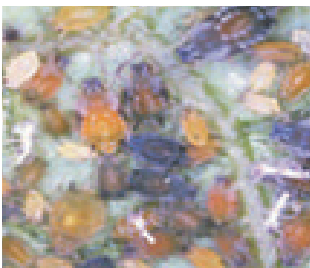
Yellow Tea Thrips



Two-spotted spider mite



**American serpentine
leaf miner**



**Superfine
K, H
Subjects of
application
And dosage**

Category	Crops	Solubility	Number of uses
Vegetables	Napa cabbages, lettuce, spinach, radish, crown daisy, chicory	40 ml/20 L	1-2 times
Fruit vegetables	Watermelons, pumpkins, tomatoes, cucumbers, eggplants, peppers, strawberries, etc.	40 ml/20 L	2-3 times
Fruits	Apples, pears, grapes, peaches, plums, blueberries, etc.	40 ml/20 L	3-5 times
Flowers	Roses, lilies, carnations	40 ml/20 L	2-3 times